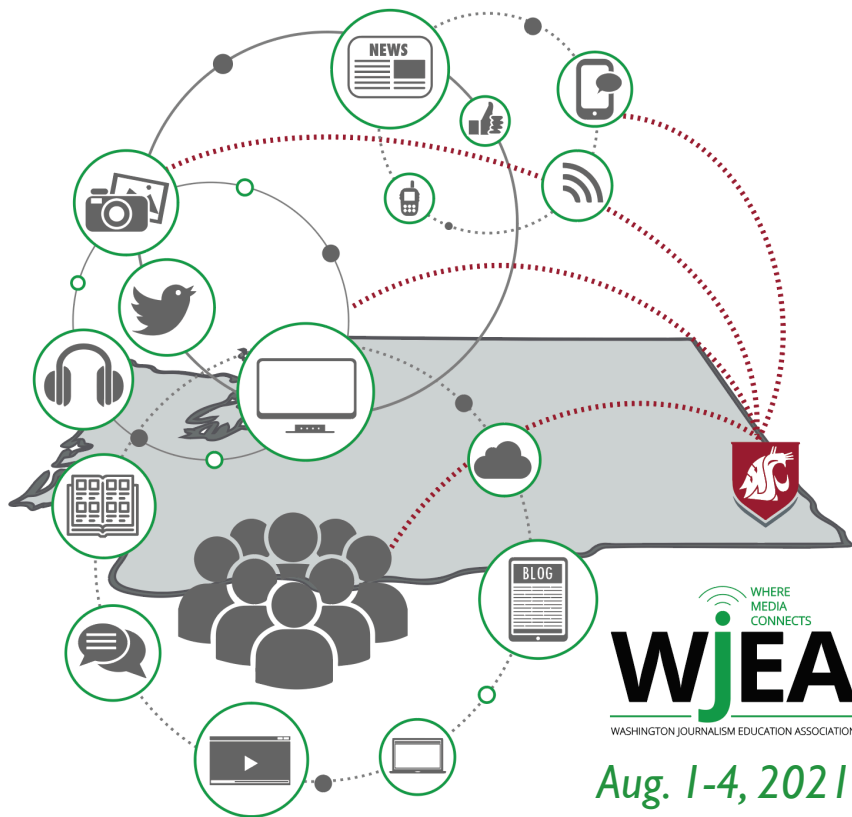


We're All Connected



Aug. 1-4, 2021

Summer Workshop for Media Advisers

Re-energize, re-invigorate, re-establish the energy during four days on campus in WSU's Edward R. Murrow College of Communication. **New advisers** will be geared up with curriculum, connections and resources to prepare them for fall.

Seasoned advisers will add to their store of knowledge, while sharing ideas and solutions with one another. **Highlights** include a keynote and virtual visits from notable journalism professionals.

Up to 20 OSPI **Clock Hours** may be purchased on site at check-in for \$4 per hour. **Registration** fee includes all meals and a single room in one of WSU's newest dorms, Olympia Hall.

Register by June 30: Returning attendees: \$425 • First-time attendees: \$450

See next page for more details

ADVISING STUDENT MEDIA (educators only) Feeling overwhelmed? Need to recharge your advising batteries? We'll take care of you with morning and afternoon refreshments and networking time as you become part of our great network of advisers! While we have a great established curriculum, we invite you to bring your concerns and questions so we can address your specific needs. Advisers are asked to bring a laptop, if possible.

Novice (fewer than three years advising) Whether you need a "boot camp" to prep for the new year or a creative kick start, we'll provide curriculum ideas, tips on staff management and legal matters, technology, motivation, grading, fund-raising – and lots of handouts and digital files. In addition to information and materials, you'll establish a network of fellow advisers who you can turn to and share with throughout the school year.

Experienced (three-plus years advising) Build on existing skills by learning more about journalism, and also by doing journalism. We know students need to become well-rounded and skilled in an increasingly complex, technology rich environment, so we've created a program focused on convergence advising for team coverage and packaging. Bring your smartphone, laptop and DSLR camera, if possible!

Clock Hours

Maximum of 20 OSPI clock hours available at \$4 per hour. Up to 10 hours can be STEM hours. Clock hours are payable on site by credit card or check.

Registration

Fee includes all meals, materials, and single room lodging from noon, Aug. 1 to noon, Aug. 4, 2021. Send school purchase orders by attachment to wjeaexecutivedirector@gmail.com or FAX to 206-583-0508; by mail to WJEA, PO Box 24389, Seattle WA 98124

Returning attendees: \$425 • First-time attendees: \$450

Registering after **July 1**: \$450 / \$475

Registration closes July15, 2021

[LINK TO REGISTRATION/PAYMENT FORM](#)

Content Questions?

Workshop Director: Sandra Coyer, MJE - coyers@gmail.com

Registration Questions?

Registrar: Kathy Schrier, MJE - wjeaexecutivedirector@gmail.com

www.wjea.org